

SKY

For Sale



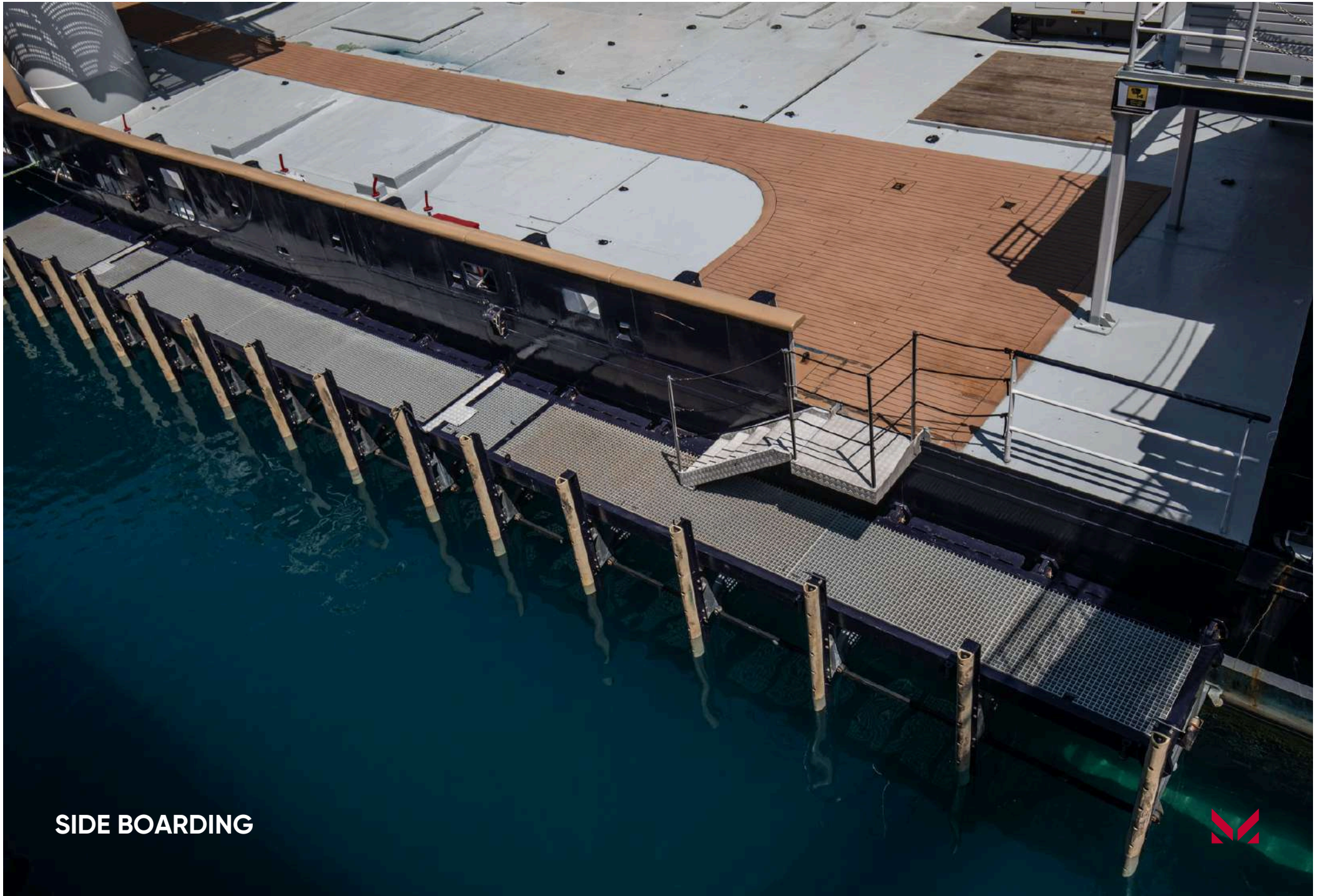
Builder	Stoczina Polnocna
Year/Refit	1999
LOA	89.39m
Beam	22.6m (Ship breadth 13.4m)
Draft	4.1m
Crew cabins	26
Crew berths	59
GT	1,728





MAIN DECK





SIDE BOARDING





FWD BRIDGE



AFT BRIDGE



CAPTAIN OFFICE





CREW LOUNGE





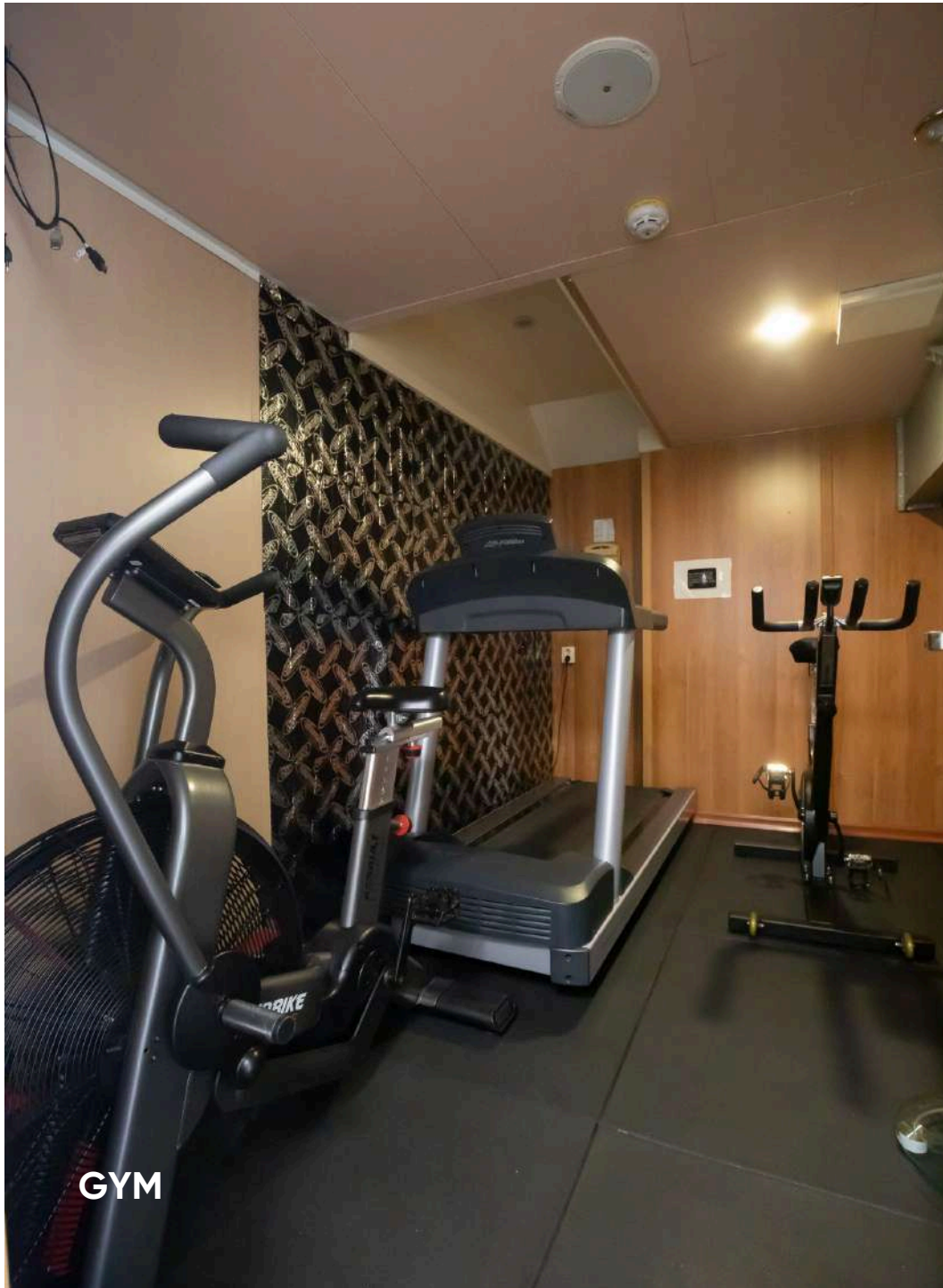
CREW MESS





CREW SNUG





GYM



CREW CABIN





GALLEY



LAUNDRY



FREEZER ROOM





ENGINE ROOM





ECR





SWITCHBOARDS



CHEMICAL STORAGE





ER STORAGE





WORKSHOP



YACHT SPECIFICATIONS

MAIN SPECIFICATIONS

Flag	Cyprus
LOA	89.39m
Beam	22.6m (Ship breadth 13.4m)
Draft	4.1m
Gross Tonnage	1,728 GT
Year Built	1999
Builder	Stoczina Polnocna
Naval Architect	Stoczina Polnocna
Hull Configuration	Full Displacement
Hull material	Steel
Superstructure	Steel
Decks	4 external
Classification	DNV A1. SPS 50 CoNotation, DPA, Dangerous Cargo Notation, Helideck certified to CA 437

ACCOMODATION

Crew Cabins	26
Crew berths	59
Arrangement	
Bridge Deck	
	1 Captain Cabin: 1 person
	1 Chief Officer Cabin: 1 person
Superstructure Deck	
	1 Chief Eng Cabin: 1 person
	1 Senior Officer Cabin: 2 persons
	1 Officer Cabin: 4 persons
	3 Officer Cabins: 2 persons
Boat Deck	
	4 Crew Cabins: 2 persons
	2 Crew Cabins: 4 persons
Main Deck	
	10 Crew Cabins: 2 persons
	2 Crew Cabins: 4 persons
	Total: 12 crew cabins for 6 persons

MACHINERY

Main Engines	
	2 x Wartsila model: 8L20, 12V32, 1,329 kW each connected to single CPP propeller
Shaft Generators	
	2 x 1,100 kW each
Engines Hours	
	Total port engine hours: 68,717 June 2025
	Total stb. Engine hours: 69,085 June 2025
Propellers	
	1 X CPP
Consumptions	
	Consumption at maximum speed 14 m ³ per 24 hrs
	Consumption at cruising speed 12 m ³ per 24 hrs
	Consumption at economical speed 10.5 m ³ per 24 hrs
	Consumption at DP 4-5 m ³ per 24 hrs
Speeds	
	Maximum speed 14 kts
	Cruising speed 13 kts
	Economical speed 12.5 kts
Range	
	Range at cruising speed 13,000+nm



These particulars have been prepared from information provided by the sellers and are intended as a general guide to the vessel. We cannot, however, be liable for any inaccuracy. It is up to the purchaser to confirm details of concern to him by survey, inspection and/or enquiry of the seller and to ensure that the purchase contract properly reflects his concern and specific details upon which he may rely. We always advise an independent survey.

YACHT SPECIFICATIONS

AUXILIARY MACHINERY & ELECTRICAL SYSTEM

Main Generators

2 x Wartsila 1,240kW each
Total port gen hours: 58,451 June 2025
Total stbd gen hours: 61,532 June 2025

1 harbour generator CAT 3306 184kW
1 emergency generator CAT 3306 184kW

Electric Power

Total power is 4,700kW of 440V @ 60 hz

ANCILLARY EQUIPMENT

Bow Thruster

1 x Brunvoll Tunnel 600kW
1 x Brunvoll Retractable Azimut 710kW

Stern Thruster

2 x Brunvoll Tunnel 450kW each

Stabilisers

Active anti-heel tanks

NAVIGATION EQUIPMENT

ECDIS	Wartsila Sam Platinum
Radars	Wartsila Sam Platinum X and S Band
AIS	SAAB R5 Supreme
Gyro Compass	1 SIMRAD GC-80 Dual gyro system MKII and 1 SIMRAD GCV-80 gyro system MKII
Auto Pilot	Anschutz Track Pilot (Heading Course model & Track mode)
Navex	Furuno NX-700
Doppler Log	EM-LOG SAM 4642
GPS	SAAB R5

TANK CAPACITIES (approximate)

Fuel Capacity in liters	509,510
Water Capacity	255,600
Clean Lub Oil	11,600
Dirty Lub Oil	6,800
Black Water	15,400
Tender Gasoline	9,000
JET A1	9,000

COMMUNICATION EQUIPMENT

Radio Transceiver	Sailor 6222
DSC Decoders	Sailor 6222
VHF	3 x Sailor
Internet	V-SAT PEP Wave Starlink 5G Antenne

DOMESTIC EQUIPMENT

- Fully Equipped Galley and Pantry
- Fully Equipped Laundry

TENDERS & WATER TOYS EQUIPMENT

Tender



YACHT SPECIFICATIONS

DECK EQUIPMENT

Deck Loading	57 / m ²
Deck Area	430 m ² Clear Deck (13 x 33m)
Under Deck Hold	84 m ² (7m x 12m with 2.70m height)
Anchors	2 x 1,520kg bower anchors
Chain length	2 x 275m 34mm chain
Hydramarine Knuckle	Starboard Aft
Boom Crane	SWL 30T @ 10m SWL 20T @ 15m SWL 12T @ 20m
Hydramarine Stiff	Port Midships
Boom Crane	SWL 15T @ 10m SWL 10T @ 15m

CREW / ADDITIONAL FACILITIES

- Exterior gym on Top Deck
- Interior cardio gym
- Hospital
- Recreation Room
- Laundry
- Jacuzzi
- Sauna

WORK LIST / REFIT

2016-2017 refit

Addition of helideck and BWTP. Docking and AF. New chilled water AC system installed (Heinen and Hopman). New dedicated "guest" cold rooms installed below deck. Addition of ROV A-Frame and support facilities for Submarine

2018 refit

Major refurbishment of accommodation and galley. Docking and AF. Rebuild of 30t crane, including new boom bushes. Same for 10t crane

2019

Upgrade of bridge Navionics to Wartsila NACOS system.

2020

Special survey. Forward void space between retractable thruster and FW tank cut out and rebuilt completely while vessel was in dock.

2021

New sewage treatment plant installed, new fridge compressors installed in forward technical space. Crew messroom fully retrofitted.

2022

Retrofit of new davit and FRC (both bespoke units built by Fasmer GMBH)

2023

Installation of bespoke IMENCO JET A1 and gasoline dispensing systems. Hull water blasted back to bare steel along with foredeck.

2024

Windlasses removed and fully rebuilt. Corrosion issues address on funnels and uptakes. Galley ventilation upgraded

2025

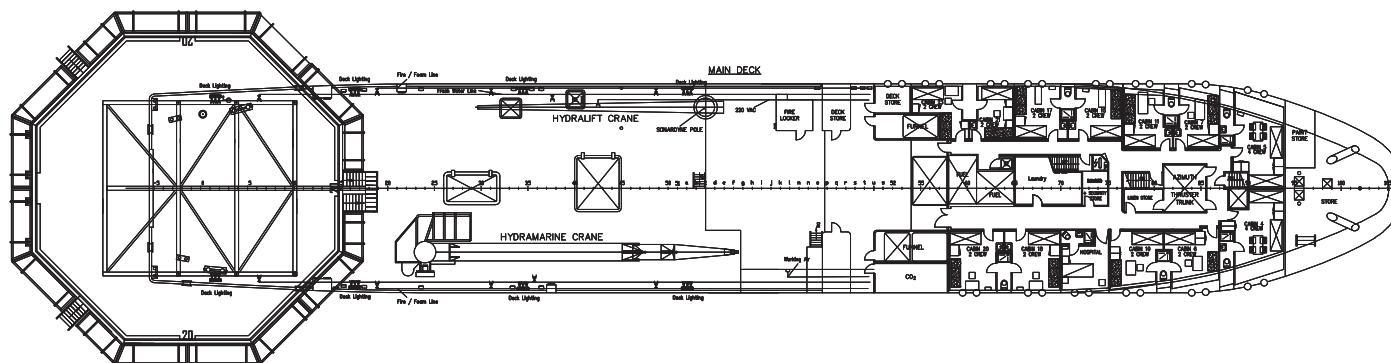
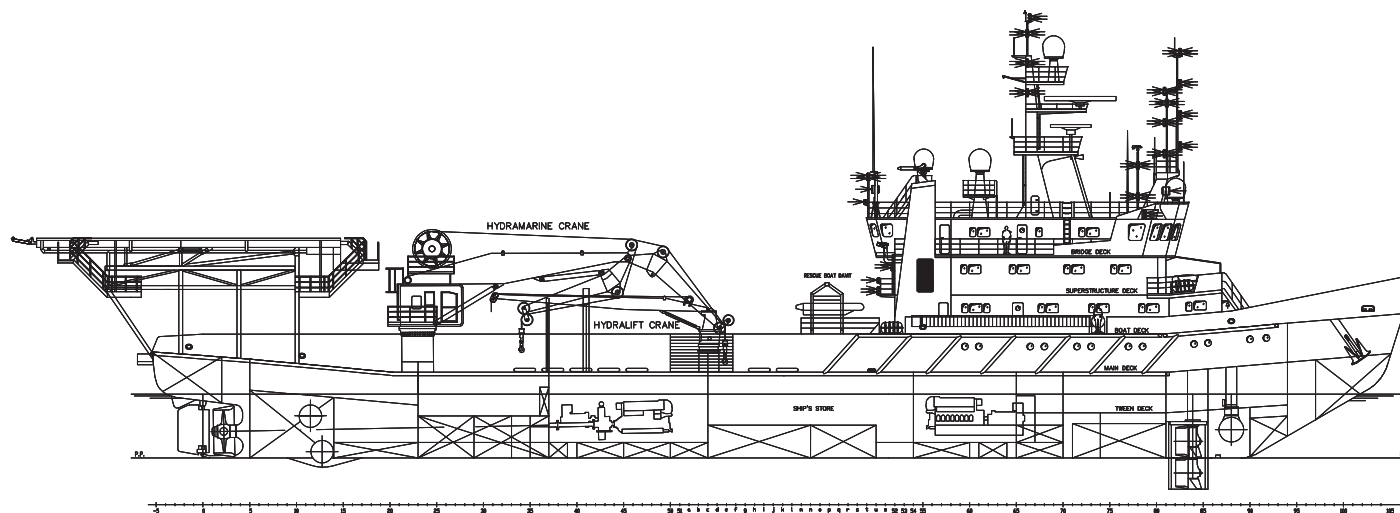
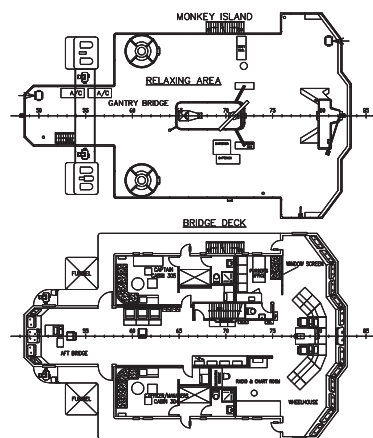
Special survey. Crane maintenance carried out according to special survey requirements, UTM and all other special survey tasks completed.

EXCLUSIONS

Items or equipment to be removed from the vessel when sold.



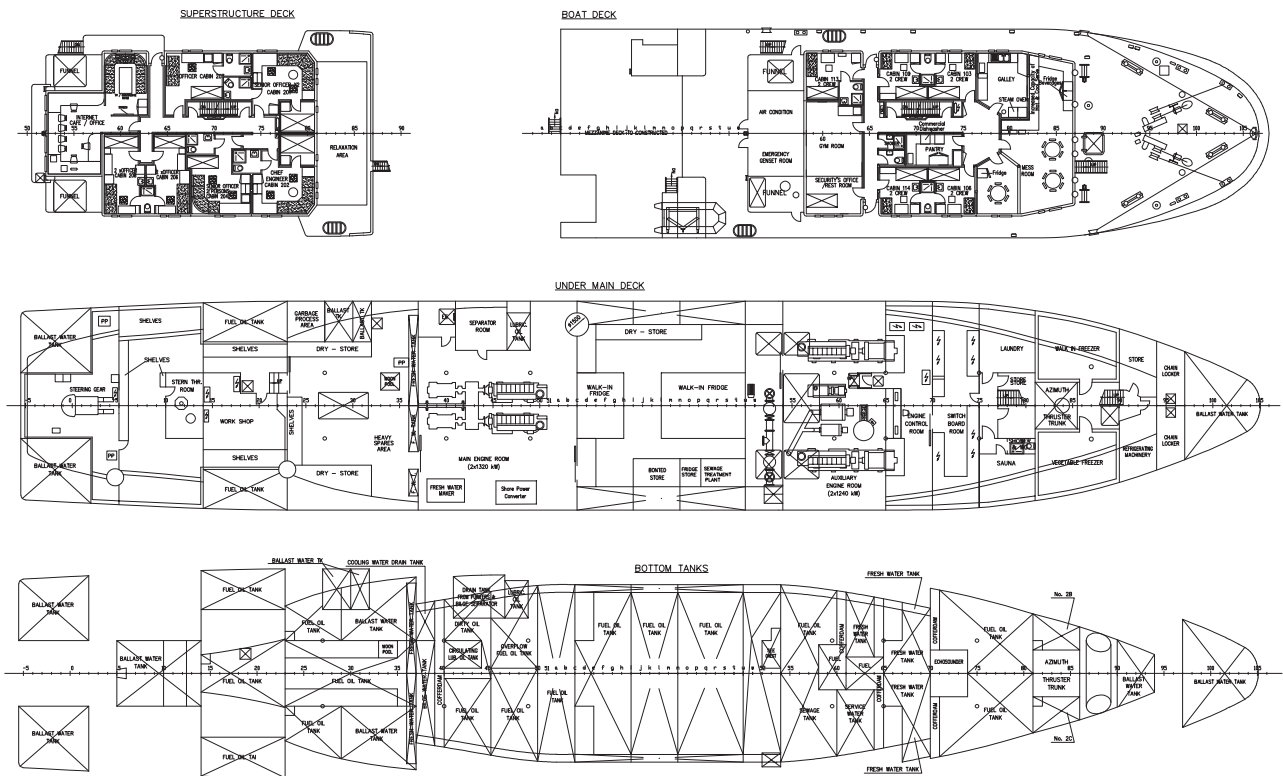
GENERAL ARRANGEMENT



These particulars have been prepared from information provided by the sellers and are intended as a general guide to the vessel. We cannot, however, be liable for any inaccuracy. It is up to the purchaser to confirm details of concern to him by survey, inspection and/or enquiry of the seller and to ensure that the purchase contract properly reflects his concern and specific details upon which he may rely. We always advise an independent survey.

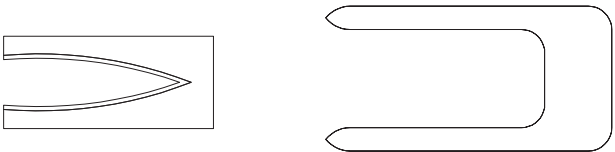


GENERAL ARRANGEMENT



MAIN PARTICULARS

21/08/2017



LENGTH OVERALL	Loa	89.39	m
LENGTH BETWEEN PERPENDICULARS	Lbp	74.558	m
BREADTH, MLD	B	13.4	m
BEAM OVERALL	Boa	22.60	m
DEPTH TO BOAT DECK	H	18.0	m
DEPTH TO MAIN DECK	H ₂	5.5/5.23	m
DRAUGHT	T	4.1	m
MAIN ENGINE 2 x WARTSILA 8 L20	Ne	1300	kW
	n	1000	rpm
SPEED	V	14	knots

Designed by	Int. Z. Sotewski	17.06.99	
Drawn by	Int. Z. Sotewski	17.06.99	
Issued by	Int. Z. Sotewski	21.10.04	
Checked by	S. Pavlov		
Object:	Name	Date	Signature
Scale	1:100		
Size	A0		
GENERAL ARRANGEMENT			
Project: 011-01			
Sheet: 1			

These particulars have been prepared from information provided by the sellers and are intended as a general guide to the vessel. We cannot, however, be liable for any inaccuracy. It is up to the purchaser to confirm details of concern to him by survey, inspection and/or enquiry of the seller and to ensure that the purchase contract properly reflects his concern and specific details upon which he may rely. We always advise an independent survey.



CONTACT

Paul Madden
PM@XplorerYachts.com
+1 561-568-3430

While every effort has been made to ensure that the information contained in this document is accurate as at the date of production, the accuracy of such information cannot be guaranteed. Moravia Yachting gives no representation, warranty or undertaking, express or implied, as to: the accuracy, reliability, completeness or reasonableness of the information contained in this document; the condition of a featured yacht and/or its equipment; the seaworthiness of a featured yacht; or the suitability and/or availability of a featured yacht for purchase or charter. The fees, specifications, figures, images and comments included in this document are subject to change without notice. This document has been produced by Moravia Yachting at the request of the person identified on the front cover for discussion purposes only and is confidential. This document must not be copied or distributed to any third party, in whole or part, without Moravia Yachting's express written permission. Moravia Yachting hereby expressly excludes any liability howsoever arising in respect of any inaccuracies or errors in the information contained in this document, to the fullest extent permitted by law.

 A Hill Robinson company

