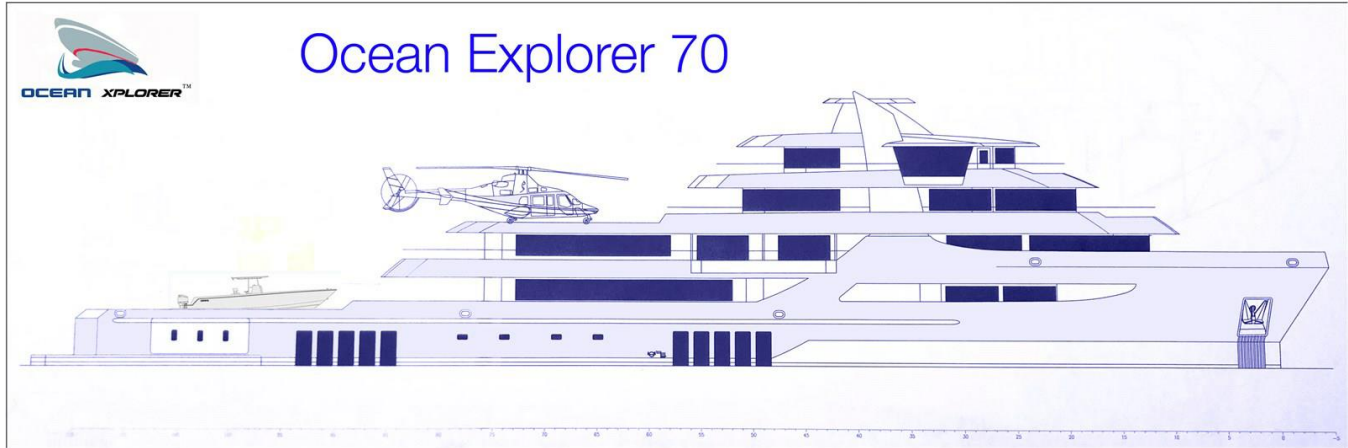




OCEAN XPLORER™

Ocean Xplorer 70



1995 NORTH AMERICAN SHIPBUILDING

| | | | |
|-------------------|-------------------|-------------------------|---------------------------------|
| LOA: | 230' (70.10m) | Build Year/Model | 1995 / 1995 |
| Beam: | 48' (14.63m) | Year: | |
| Min Draft: | 11' (3.35m) | Builder: | NORTH AMERICAN SHIPBUILDING |
| Max Draft: | 13' (3.96m) | Type: | Expedition Yacht |
| Speed: | Cruising 15 Knots | Price: | \$23,000,000 USD |
| VAT Paid: | | Location: | Tampa, Florida United States |

Additional Specifications For Ocean Xplorer 70:

| | | | |
|------------------------|---------------------------------|-------------------------|---|
| LOA: | 230' (70.10m) | Delivery/Model | 1995 |
| Beam: | 48' (14.63m) | Year: | |
| Min Draft: | 11' (3.35m) | Year Built: | 1995 |
| Max Draft: | 13' (3.96m) | Builder: | NORTH AMERICAN SHIPBUILDING |
| Hull Material: | Steel | Type: | Expedition Yacht |
| Hull Config: | Bilge Keel | Engines: | 3420 HP, Twin, 1995, Inboard, Diesel, CAT, 3516, |
| Deck Material: | Teak and Steel | Staterooms: | 6 |
| Tonnage: | 2,100 | Classifications: | |
| Range At Cruise | 7000 | MCA: | ISM: |
| Speed: | | | |
| Speed: | Cruising 15 Knots | | |
| Int Designer: | Murray & Associates | | |
| Ext Designer: | Murray & Associates | | |
| Fuel Capacity: | 152,846.00 Gal | | |
| Water Capacity: | 24,370.00 Gal | | |
| Flag: | United States | | |
| Location: | Tampa, Florida United States | | |
| Price: | \$23,000,000 USD | | |

Accommodations

The MASTER CABIN is on the very private OWNER'S DECK. It features panoramic views from the king bed looking out on a private owner's sundeck with a jacuzzi and sunning areas. His and Hers baths, walk-in closets and a spacious owner's office are all in the owner's suite. Aft on the owner's deck is a lounge with its own bar, a piano and 60" LED monitor. Another private deck aft has seating for alfresco dining for 12, and sun lounges with umbrellas.

4 large GUEST SUITES are on the upper deck. Each has its own private sundeck. Forward on this deck is the formal dining room and a spacious forward-facing salon which opens up onto another sundeck. Nearby is a serving pantry and a massage room.

On the main deck is a VIP Suite which has its own lounge area and a spacious private sun deck.

Machinery

Note: We have diesel-electric and direct-drive azipod vessels available, in addition to conventional direct drive diesel propulsion vessels.

Main Propulsion Two (2) CAT 3516 Diesels, 3,420 BHP 1,000 HP

Bow & Stern Thrusters Azimuthing 1,000 HP

Generators Three (3) CAT 3406

Special Features

Dynamic Positioning - DP1 with bow & stern x 1,000 hp azipod thrusters

Classification

ABS Star All Oceans-Unrestricted Service ABS Circle E

ABS DP-1

USCG Subchapter L (OSV)

Tenders and Toys

This vessel has the capacity to carry:

1 x twin-turbine helicopter

2 x submersibles

4 x ATV's

2 x 34' Tenders

1 x RIB with ramp for ATV transport

1 x SUV vehicle

1x Crew RIB

2 x ski/sport boats

2 x Laser sailboats

Dive locker with compressor with direct ocean access through side door

Entertainment

Vessel will be fitted with state-of-art entertainment systems.

Electronics

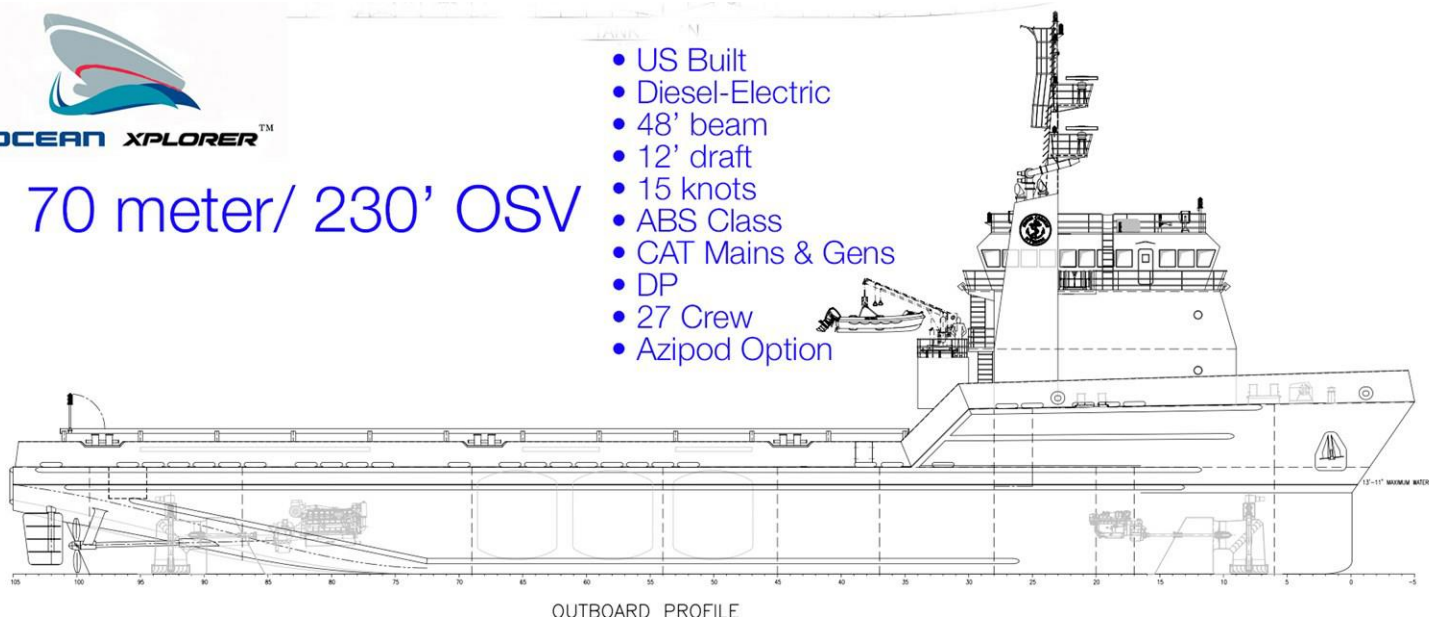
Vessel will be fitted with state-of-art satnav and radio communications systems.

OSV platform

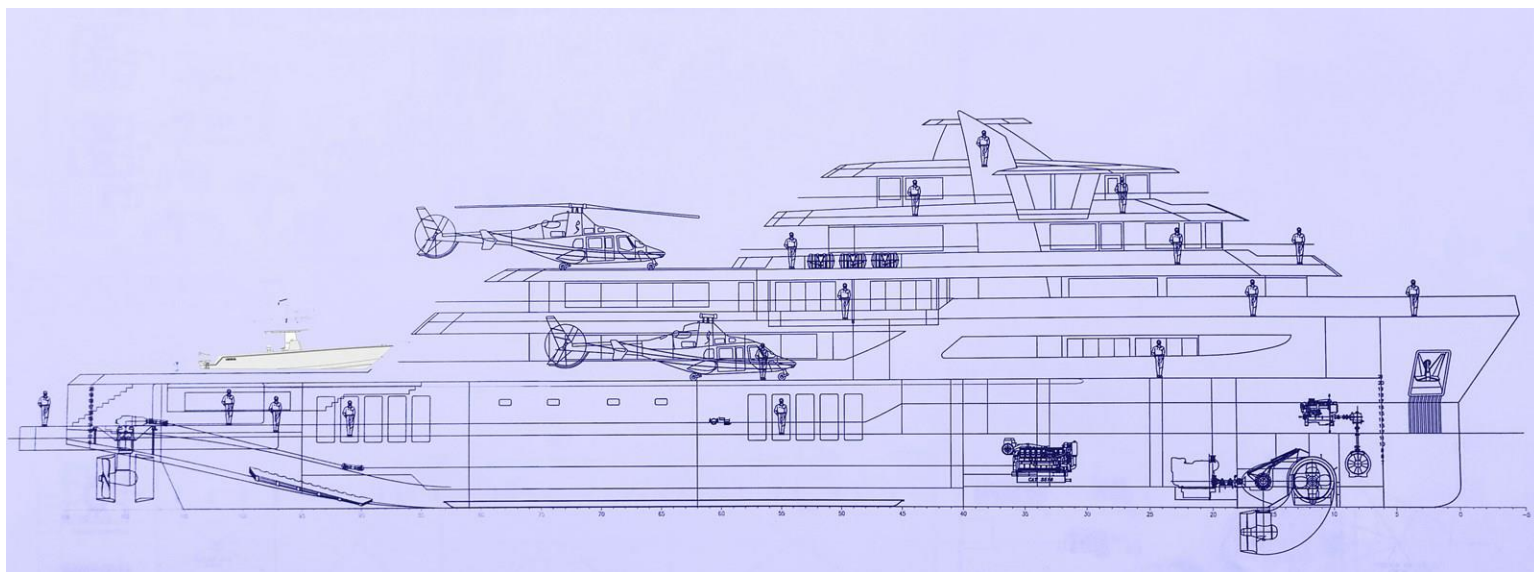


70 meter/ 230' OSV

- US Built
- Diesel-Electric
- 48' beam
- 12' draft
- 15 knots
- ABS Class
- CAT Mains & Gens
- DP
- 27 Crew
- Azipod Option



Ocean Xplorer Profile Cutaway

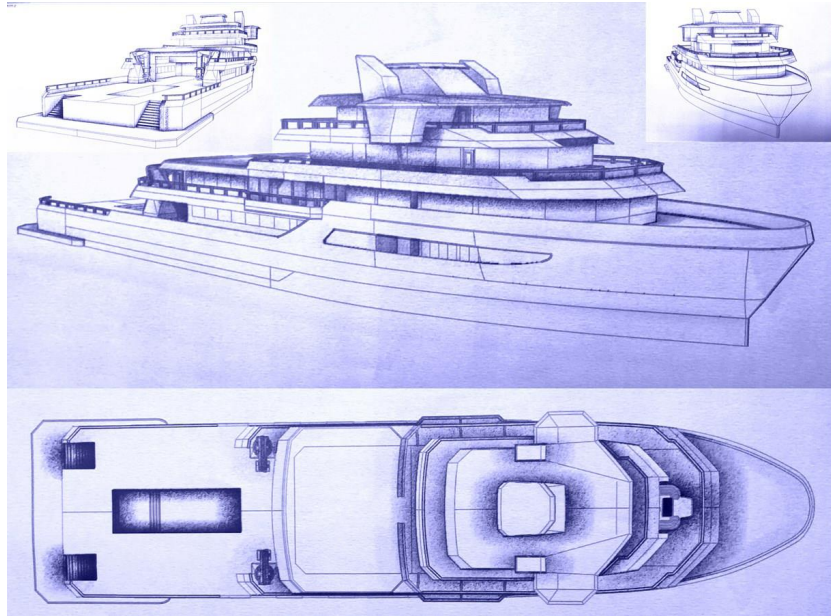


Ocean Xplorer Yachts
125 Island Drive
Middletown Rhode Island
02842 United States

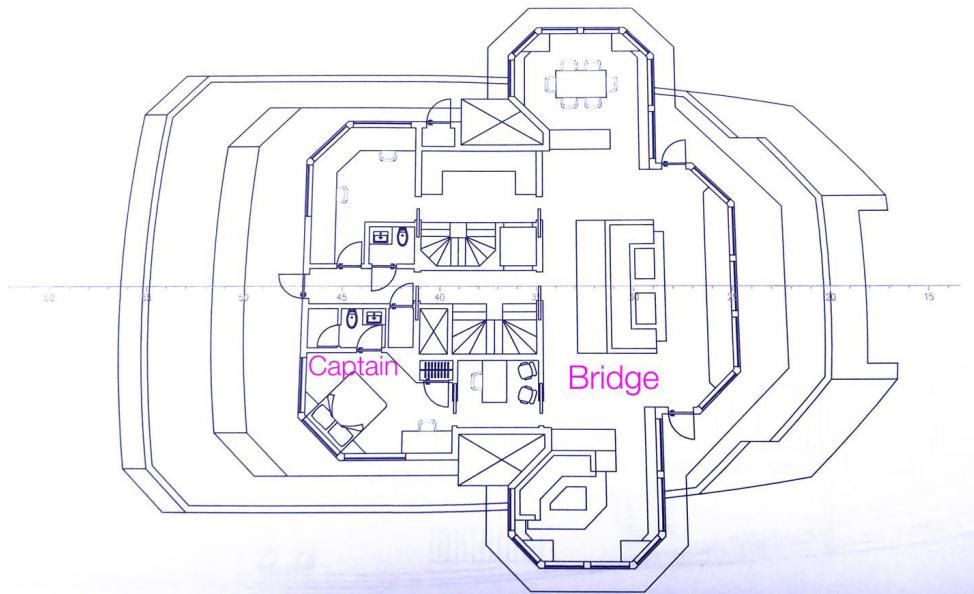
Paul Madden
P: 561.568.3430
PM@XplorerYachts.com
www.xploreryachts.com

Ocean Xplorer 70

Ocean Xplorer 70 Ocean Xplorer 70 Design Study

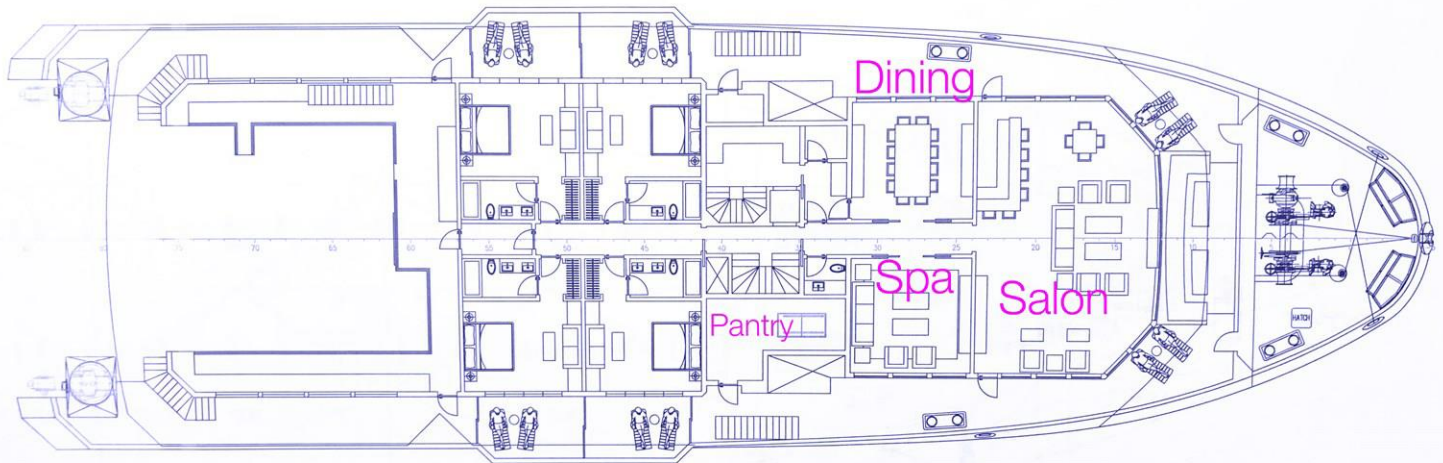


Ocean Xplorer 70 Ocean Xplorer 70 bridge deck

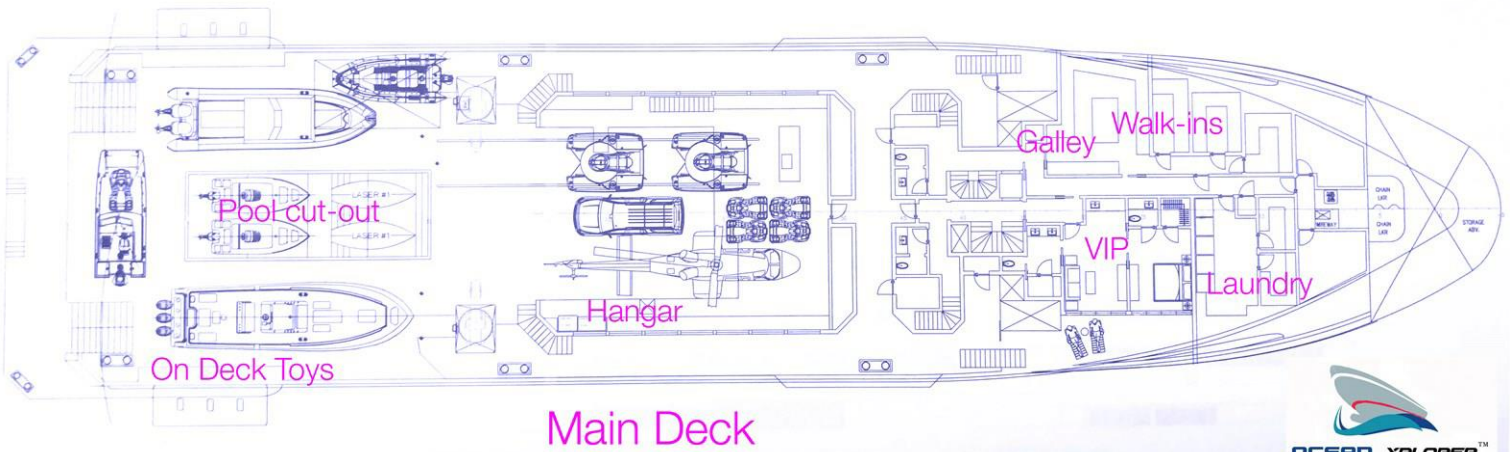


Ocean Xplorer 70 guest deck

Guest Suites



Ocean Xplorer 70 maindeck



Main Deck

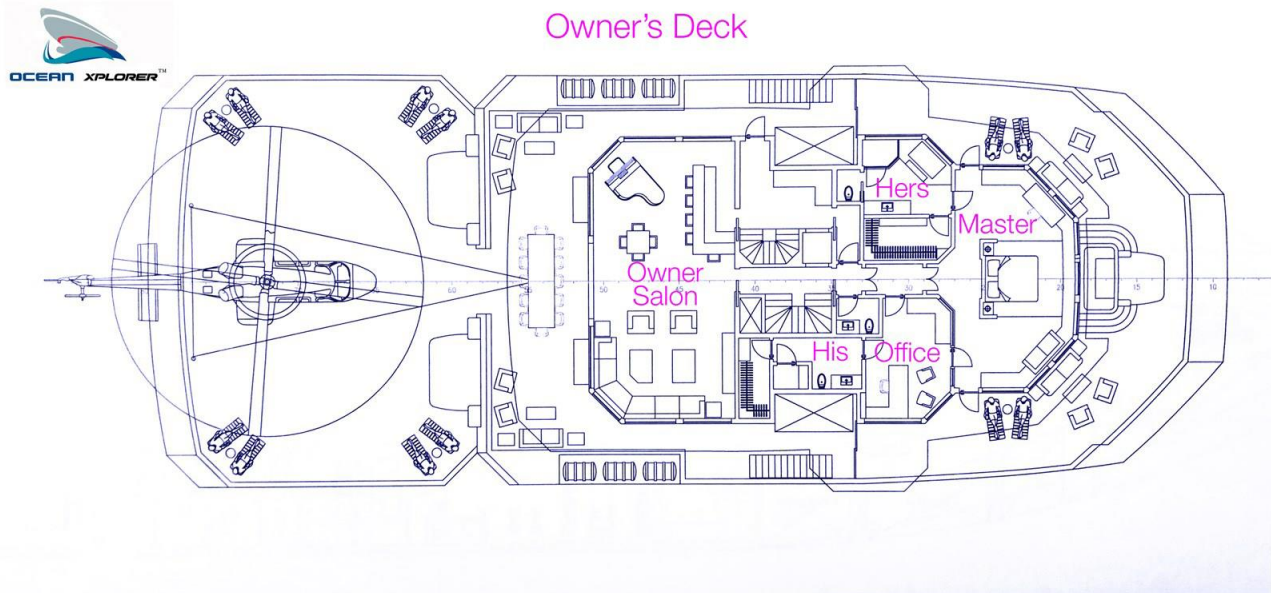


Ocean Xplorer Yachts
125 Island Drive
Middletown Rhode Island
02842 United States

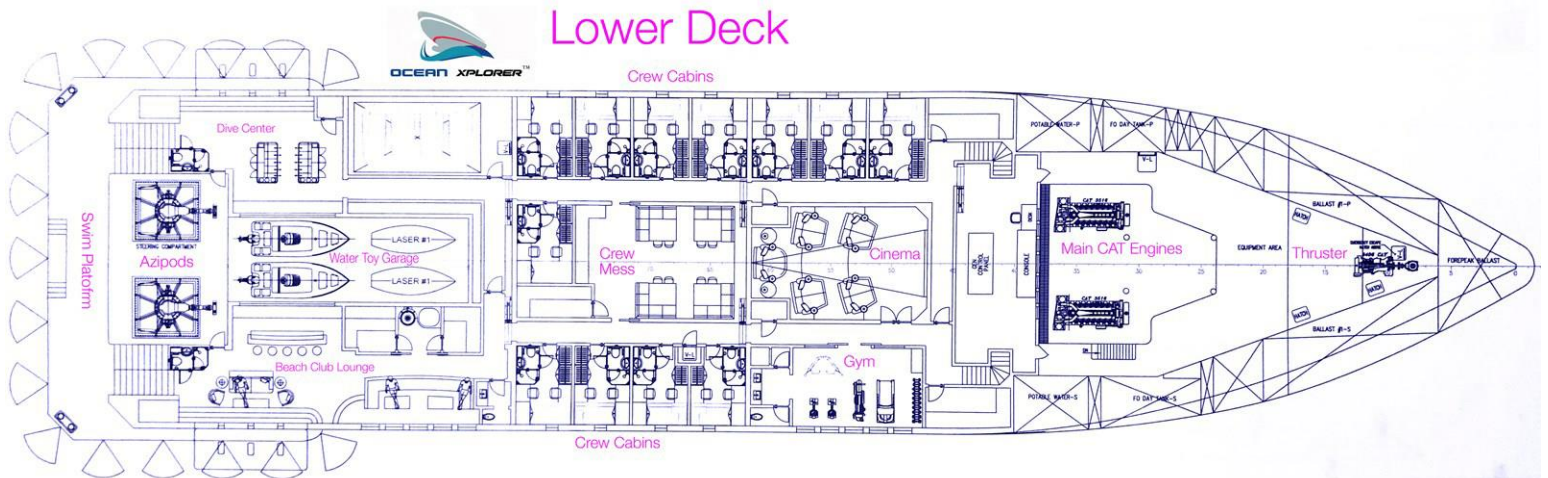
Paul Madden
P: 561.568.3430
PM@XplorerYachts.com
www.xploreryachts.com

Ocean Xplorer 70

Ocean Xplorer 70 masterdeck



Ocean Xplorer 70 lower deck



Ocean Xplorer Yachts
125 Island Drive
Middletown Rhode Island
02842 United States

Paul Madden
P: 561.568.3430
PM@XplorerYachts.com
www.xploreryachts.com

Ocean Xplorer 70

ADDED VALUE EQUATION

• **Commercial Rates**

- shipyard efficiency and hourly rates not available at 'yacht yards'
- all main fabrication components are provided "in-house" without sub-contractor add-on fees

• **Modular Fabrication**

- Crew Quarter
- Galley and Service
- Spa and Pool
- Guest Staterooms and Heads
- Dining and Salons

• **Classification and Certification**

- our platforms are class-approved internationally

• **Performance Bonds on Construction**

- pricing and delivery security

• **Financial Security**

- Trusted shipyards with long-term financial security



Collaboration

A COLLABORATION OF TRUSTED PARTNERS

- American Commercial Shipyards
- Caterpillar Power
- Modular Interior Components
- Built to Class
- Redundant Long-Range Systems
- Preferred Vendors:
(subs, helis, ROV's, Tenders Toys)



modular interior



Ocean Proven



OCEAN
PROVEN

- designed & built to meet global missions
- unmatched range and endurance
- safety & lasting value built-in



Specs

SPECIFICATIONS TO MEET YOUR MISSION

- Helicopter Hangar
- ROV & Submersible
- Dive Center w Decompression
- Science Lab
- Multiple RIBS & Tenders
- Global Range
- Ice-Class Available
- Dynamic Positioning
- Diesel Electric Azipods Available
- Stabilization

