

164 ft / 50m Ice-Class Xplorer Yacht available project for delivery in 20-24 months

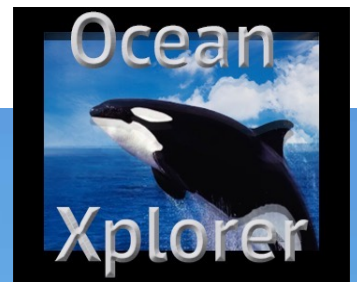
Sister ship



This ice-class expedition yacht is an opportunity to fast-track a new build. A significant percentage of building work is already completed and substantial equipment inventory has already been purchased. The steel hull and aluminum superstructure is complete and joined. Equipment that comes with the hull purchase includes the main propulsion engines, 16V 2000M70, MTU, with ZF Gearboxes.

This is the second hull that was to be built as a series. This owner will sell the project with much of the machinery and systems included.

Xplorer Yachts will finish this yacht with a new custom interior designed to meet the new owner's specification.



Project



Sister ship

CABINS: 6

GUESTS: 12

CREW: 12

PICTURE SISTER SHIP





Sister Ship





MAIN CHARACTERISTICS

	CABINS 6
	GUESTS 12
L.O.A 163' 3" (49.75m)	CREW 12
BEAM 31' 3" (9.50m)	ENGINES/TYPE MTU / 16V 2000M70
DRAFT 3.55m / 11' 8"	FUEL CAPACITY 125,000 l (33,022 g)
MAIN ENGINES MTU	WATER CAPACITY 18,400 l (4,861 g)
FLAG N/A	FUEL TYPE Diesel
	CONSTRUCTION Hull material - Steel

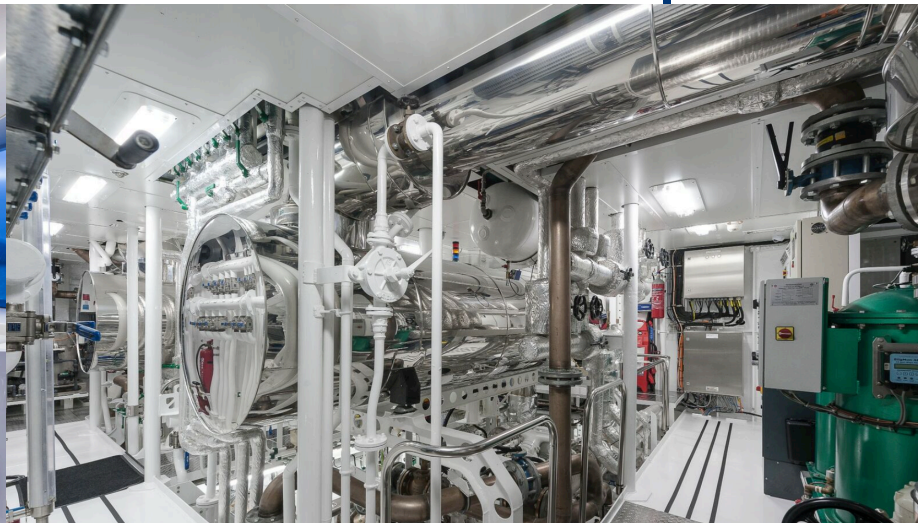


- Metallic Structure
- Steel Hull (Grade A)
- Aluminum superstructure
- Materials Installed or Stored
- One (1) Bow Thruster type KT - 150, maker KORT PROPULSION LTD., welded on the hull.
- Two (2) Main Propulsion Engines, type 16V 2000M70, maker MTU, with serial nos 536109838 and 536109839, with flanged type gearboxes type 3350, maker ZF.
- Two (2) main engines silencers type SM40P, DN300.
- Three (3) diesel generators, type C6.6, maker CATERPILLAR, Power 125 kWe (156 kVA) / 50 HZ / 380 V, with serial nos C6T00267, C6T00268 and C6T00269.
- One (1) emergency diesel generator, type C4.4, maker CATERPILLAR, Power 49 kWe / 50 HZ / 380V.
- One (1) complete electrohydraulic steering gear system for two rudders, type DDS 1600, maker DATA HYDRAULIC MAKINA SANAYI A.S.
- One (1) complete electrohydraulic stabilizing system for two fins, type QC1800, maker QUANTUM Hydraulics.
- One (1) Sewage Treatment Plant, type HL - CONT PLUS 02 SLIM, maker HAMANN AG.
- Twenty (20) Marine Type WC bowls, type 910, Maker EVAC.
- One (1) Vacuum System for the black water system, type ON LINE FLEX, Maker EVAC.
- Bulkhead penetrations 50mm Deck penetrations 50mm
- One(1) complete fire suppression system, type HI FOG, Maker MARIOFF.
- One (1) Bilge Oil Separator, type POSEIDON EVO 1.0 BM, Maker E.P.E.
- Two (2) Watermakers, type ALIOS EVO 10.0, Maker E.P.E.
- One (1) Diesel Oil Separator, type MAB103, maker ALFA LAVAL
- Two (2) Galvanised Steel Chains, d:22mm, 120 meters each.



Sister ship

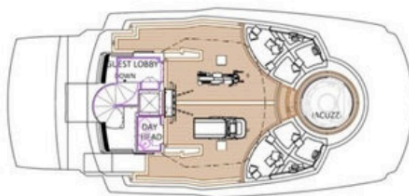
Project





Sister ship

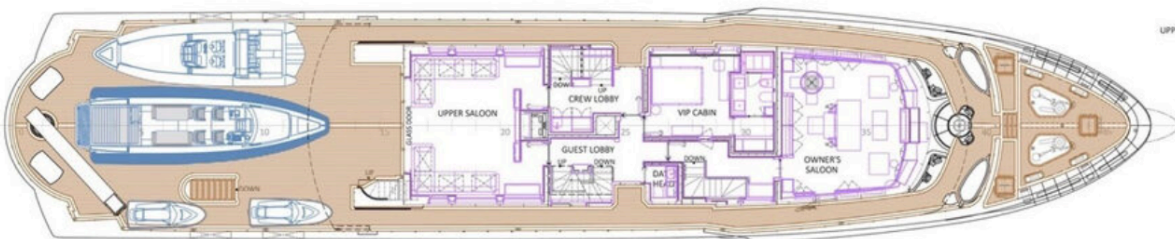
OBSERVATION DECK



BRIDGE DECK



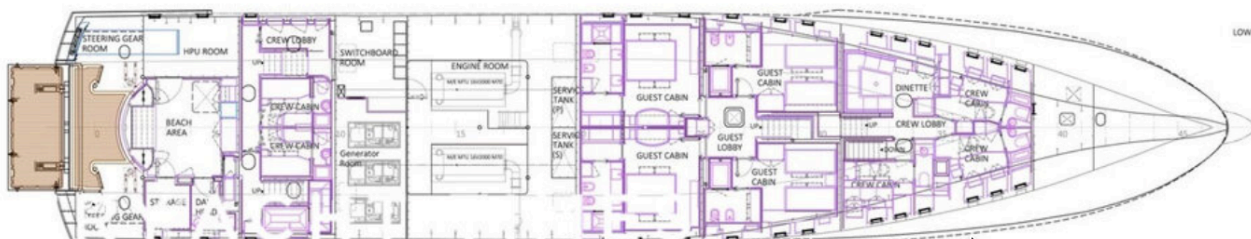
UPPER DECK



MAIN DECK



LOWER DECK



Project



Contact: Paul Madden
PM@XplorerYachts.com
+1 561 568-3430

Sister ship

PICTURE SISTER SHIP

